

## Wedding Locations

### CEREMONY LOCATIONS & CAPACITIES

Location	Maximum Seating Capacity
Sky Terrace*	120
Beach	200
Garden Gazebo	40
Diamond Club Deck	60

*\*Sky Terrace Ceremony Package (\$1500) required for purchase on top of wedding package of your choice*

### COCKTAIL LOCATIONS & CAPACITIES

LOCATION	MAXIMUM STANDING CAPACITY	AVAILABLE
Lobby Terrace	80	Before 6:00pm
Garden Gazebo	40	Before 6:00pm
Aquarius Bar, Hideaway   Lower Terrace	50	Before 5:30pm
Sky Terrace*	120	Before 6:00pm

*\*Sky Terrace Ceremony Package (\$1500) required for purchase on top of wedding package in order to use location for cocktail hour.*

### SEMI-PRIVATE RECEPTION LOCATIONS AND CAPACITIES

This dinner is not private. Sound system and decorations are not allowed in these below semi-private locations.

LOCATION	MAXIMUM SEATING CAPACITY	SEATING TIMES
Gourmet Marche   Buffet Terrace (full)	80	6:00pm
Gourmet Marche   Buffet Terrace (partial)	50	6:00pm
Armadillo Terrace   Tex-Mex	20	6:00pm
Dorado Terrace, Hideaway   Seafood	20	6:00pm

*\*Formal dress code required*

### PRIVATE RECEPTION LOCATIONS AND CAPACITIES

Includes round tables with white linens, white chairs and basic silverware

LOCATION	MAXIMUM SEATING CAPACITY	SEATING TIMES
Diamond Club Poolside	100	7:00pm
Diamond Club Beach	80	7:00pm
Sky Terrace	110	6:00pm
Garden Gazebo	10	6:00pm
Beach	120	6:00pm
Ballroom	240	6:00pm

*\*Extra fee of \$200 USD per hour will apply for ballroom events held past 11:00pm; Ballroom events must end by 2:00am*

**SEMI-PRIVATE BRUNCH LOCATIONS AND CAPACITIES**

This lunch is not private. Sound system and decorations are not allowed in these below semi-private locations.

LOCATION	MAXIMUM SEATING CAPACITY	SEATING TIMES
Grazie   Italian (Indoor)	75	12:00pm-4:00pm
Gourmet Marche   Buffet Terrace	80	7:00am-11:00am;12:30pm-3:00pm

## Sky Terrace

Ceremony  
Maximum capacity: 120

*Includes white tiffany chairs or white cross back chairs  
Décor and coloured draping can be added at an additional cost  
\*\*See “Sky Terrace Ceremony Package” for additional cost\*\**



## Beach

Ceremony  
Maximum capacity: 200

*Includes white tiffany chairs or white cross back chairs  
No structure included  
Décor and draping can be added at an additional cost*





## Garden Gazebo

Ceremony  
Maximum capacity: 40

*Includes white tiffany chairs or white cross back chairs  
Décor and draping can be added at an additional cost*



## Diamond Club Deck

Ceremony  
Maximum capacity: 60

*Includes white tiffany chairs or white cross back chairs  
No structure included*

*Décor and draping can be added at an additional cost*

*\*Diamond club bar can only be used if guests are Diamond Club guests\**





## Lobby Terrace

Cocktail Hour

Maximum standing capacity: 80

*\*Existing furniture will be removed depending on guest count\**



**Royalton Weddings**

weddingplanner@royaltonresorts.com

**Toll Free: 1-877-687-7793**

## Garden Gazebo

Cocktail Hour  
Maximum capacity: 40  
*Minimal décor can be added at an additional cost*





## Aquarius Bar | Lower Terrace

Cocktail Hour  
Maximum capacity: 50

*Located at Hideaway, adults only  
Minimal décor can be added at an additional cost*



## Sky Terrace

Cocktail Hour  
Maximum capacity: 120

*Minimal décor can be added at an additional cost*

*\*Sky Terrace Ceremony Package must be purchased to use this location for the cocktail hour\**





## Gourmet Marche | Buffet Terrace

Semi-Private Reception  
Maximum capacity (Full Buffet Terrace): 80  
*Menu: Buffet offered at restaurant*

Maximum Capacity (Partial Buffet Terrace): 50  
*Set Menu: Calypso or Armadillo*

*Existing tables and chairs used  
Minimal décor can be added at an additional cost*





## Armadillo Terrace | Tex Mex Cuisine

Semi-Private Reception  
Maximum capacity: 20

*Existing tables and chairs used  
Minimal décor can be added at an additional cost*



## Dorado Terrace | Seafood

Semi-Private Reception  
Maximum capacity: 20

*Located at Hideaway, adults only  
Existing tables and chairs used  
Minimal décor can be added at an additional cost*

*Formal dress code required*

*Not permitted at Dorado: Baseball caps, peaks, tank tops, flip-flops, sport shorts, dress shorts, sandals*



**Royalton Weddings**

weddingplanner@royaltonresorts.com

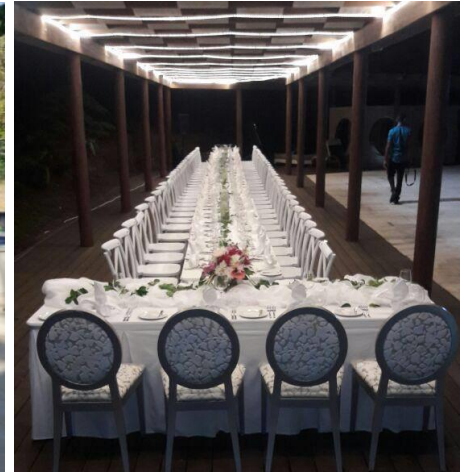
**Toll Free: 1-877-687-7793**

## Diamond Club Poolside

Private Reception  
Maximum capacity: 100

*Menu: Buffet Menu Only*

*Includes rectangular with white tiffany chairs or white cross back chairs, & lighting*  
*\*Area is not covered & no round tables at this location\**  
*Decor can be added at an additional cost*





## Diamond Club Beach

Private Reception  
Maximum capacity: 80

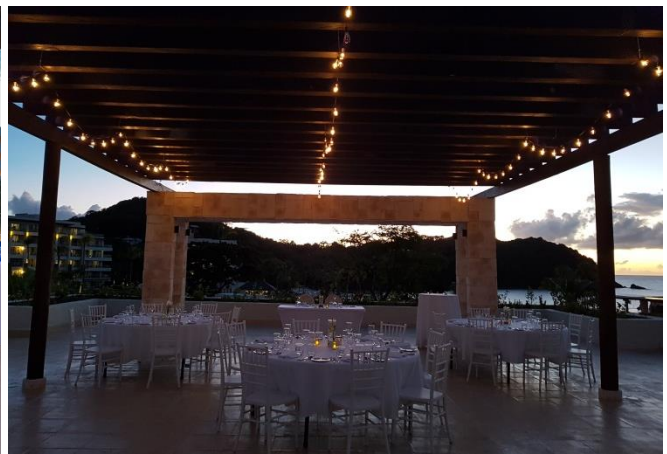
*Menu: Plated, Buffet or Family Style*  
*Includes round tables with white tiffany chairs or white cross back chairs*  
*Decor can be added at an additional cost*



## Sky Terrace

Private Reception  
Maximum capacity: 110

*Menu: Plated, Buffet or Family Style  
Includes round tables with white tiffany chairs or white cross back chairs  
Decor can be added at an additional cost*

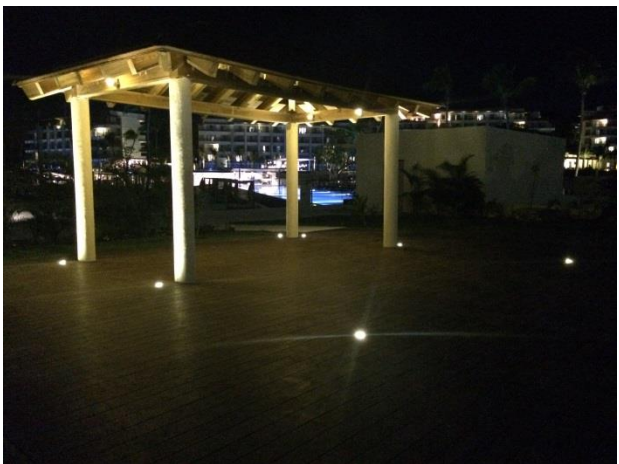




## Garden Gazebo

Private Reception  
Maximum capacity: 10

*Menu: Plated or Family Style  
Includes round tables with white tiffany chairs or white cross back chairs  
Decor can be added at an additional cost*





## Beach

Private Reception  
Maximum capacity: 120

*Menu: Plated, Buffet or Family Style*  
*Includes round tables with white tiffany chairs or white cross back chairs*  
*Decor can be added at an additional cost*



## Ballroom

Private Reception

Maximum capacity: 240

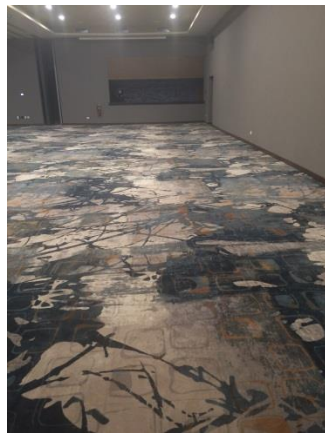
*\*up to 120 people per section if no dance floor space is required\**

*Menu: Plated, Buffet or Family Style*

*Includes round tables with white tiffany chairs or white cross back chairs*

*Decor can be added at an additional cost*

<p><i>Room 1          Banquet          seating of          up to 80          people</i></p>	<p><i>Room 2          Banquet          seating of          up to 80          people</i></p>	<p><i>Room 3          Banquet          seating of          up to 80          people</i></p> <p><i>*Not to scale</i></p>
---	---	---



**Royalton Weddings**

weddingplanner@royaltonresorts.com

**Toll Free: 1-877-687-7793**



## Grazie | Italian (Indoor)

Semi-Private Brunch  
Maximum capacity: 75

*Grazie Menu – Family Style only  
Existing tables and outdoor chairs used  
Minimal décor can be added at an additional cost*





## Gourmet Marche | Buffet Terrace

Semi-Private Brunch  
Maximum capacity: 80

*Menu – Buffet offered at restaurant  
Existing tables and chairs used  
Minimal décor can be added at an additional cost*

